

Raymond N. Herb, Jr.
Michael L. Myer
Susan M. Herb
Kathleen M. Herb
Jeffrey A. Carpenter



Realtors / Since 1927
(717) 272-5637

FOR LEASE in Lebanon County
1510 Cornwall Road, 1st Floor, Lebanon, PA 17042



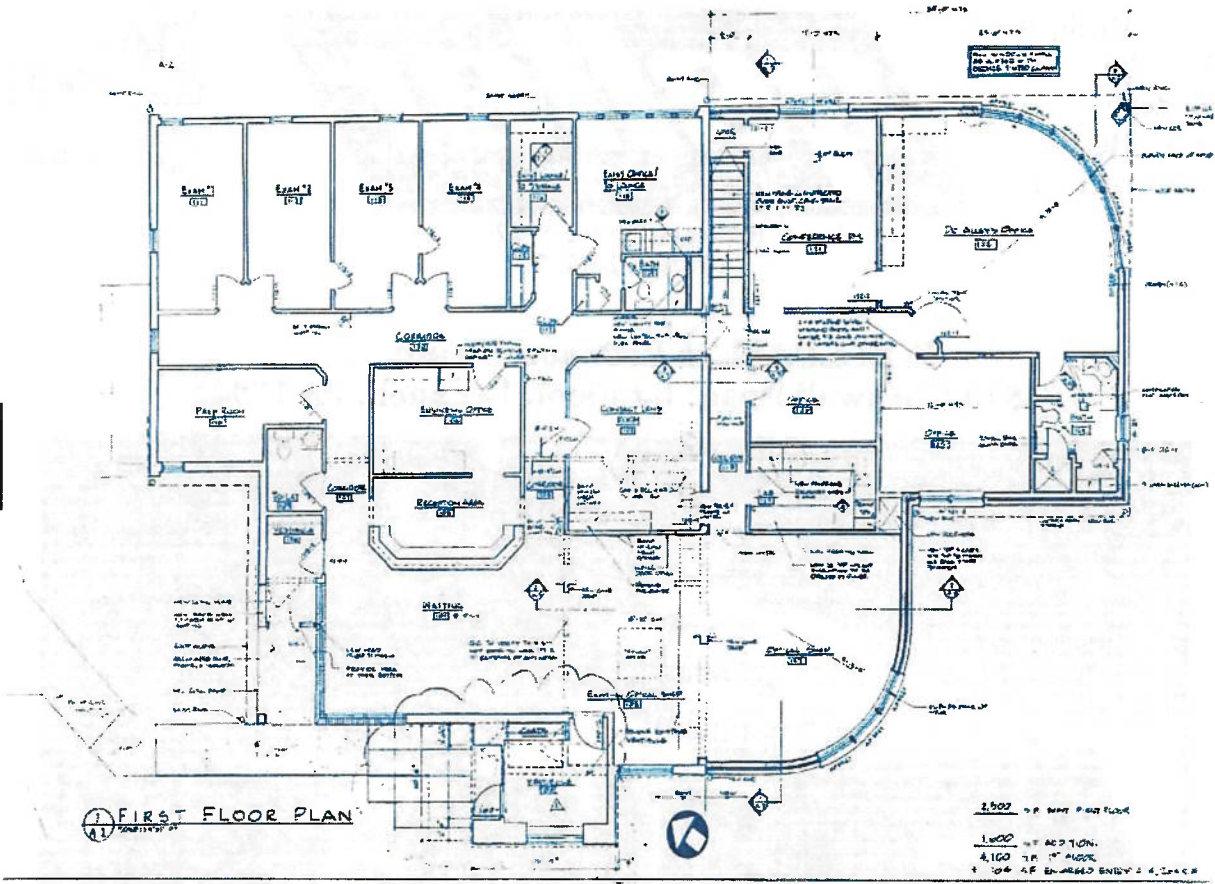
- ◆ *4,200 SF Office Space*
- ◆ *Medical or Business Use*
- ◆ *Exam Rooms/Offices*
- ◆ *Standard Electric Svc.*
- ◆ *Warm Air Heat w/AC*
- ◆ *Ample Bath Facilities*
- ◆ *Solid Masonry Construction*
- ◆ *Zoned Office & Institutional*
- ◆ *On Site Water/Public Sewer*
- ◆ *Plenty of Off-Street Parking*
- ◆ *GREAT Southside Location*
- ◆ *Floor Plan included in Brochure*

This property is located in North Cornwall Township and consists of first floor office space which is ideal for medical or professional office use. Same is located in the Tuck Business Park. If you would like more information, please give us a call or email at info@gellerrealestatecompany.com.

Call Ray Herb, Jr. or Mike Myer at (717) 272-5637
Commercial/Industrial Sales and Leasing

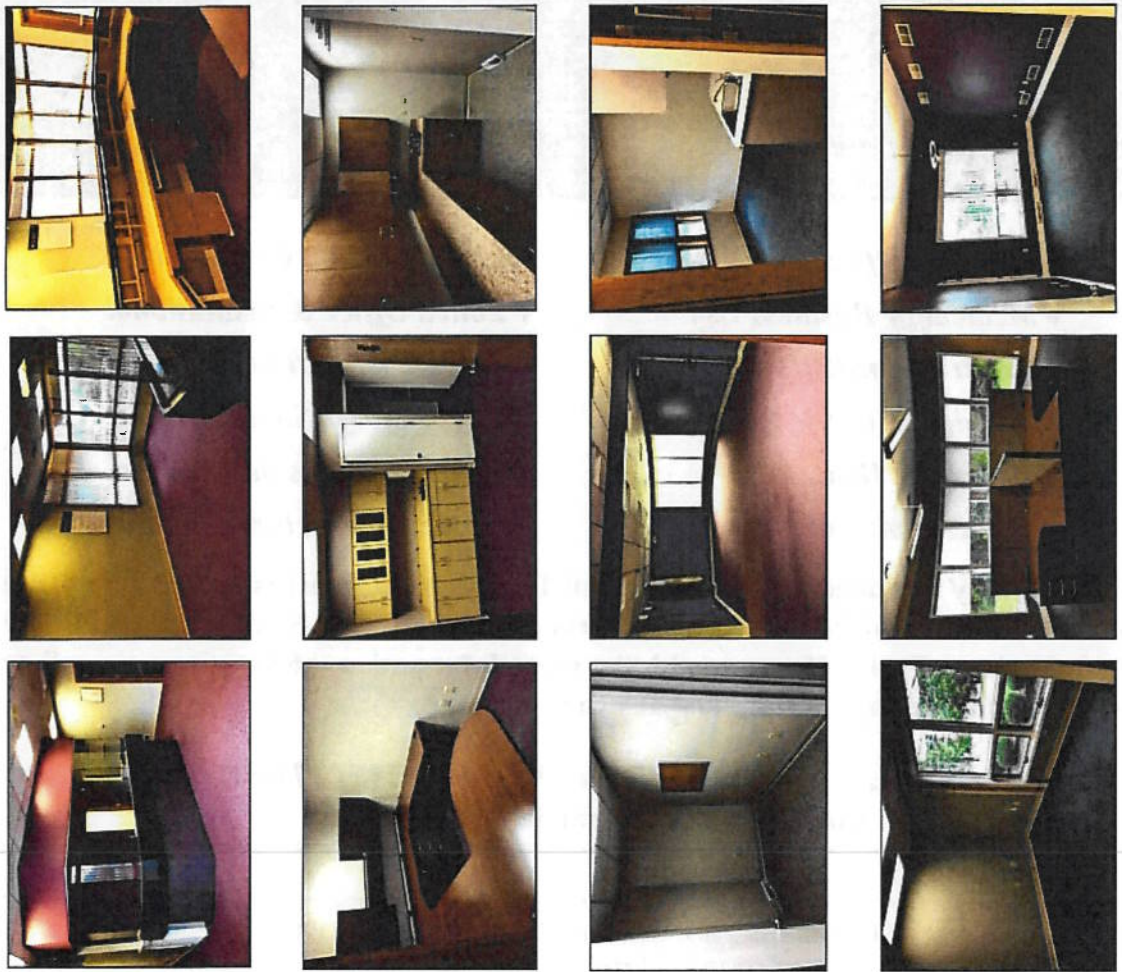
Mailing Address: P.O. Box 706, Lebanon, PA 17042

Floor Plan



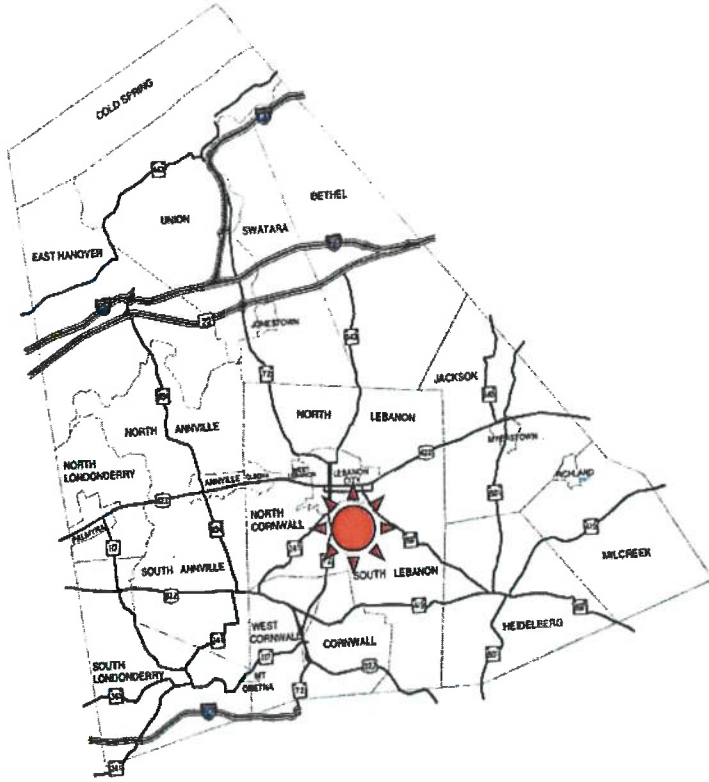
NOT TO SCALE

Photos

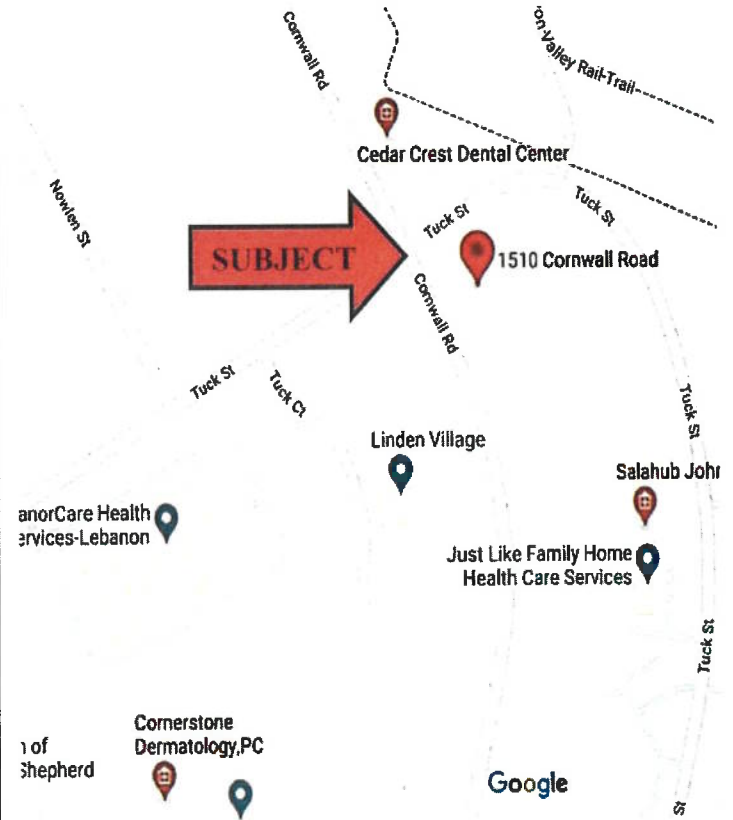


More Photos on the back!

COUNTY MAP



LOCATION MAP



Additional Photos



